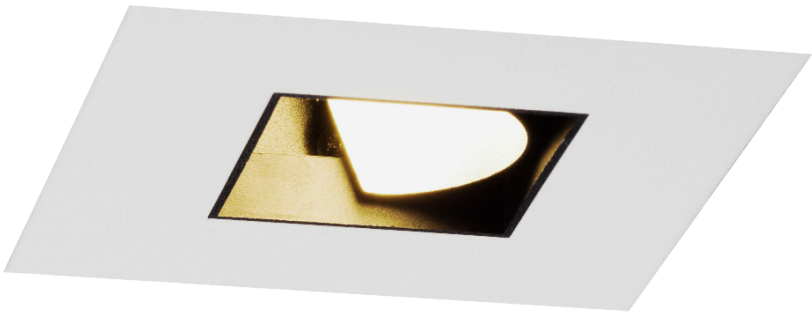
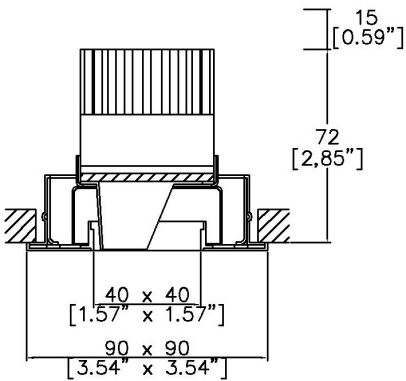


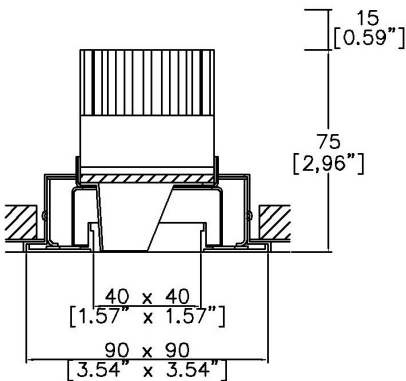
ProSpex Square Edge90 Washlight Low Height



90 x 90mm (3.54 x 3.54") overall dimension. Shallow Height Low Output downlight. Frosted lens and kick reflector for throwing light onto the wall as well as down. Edge baffle to ensure aperture is glare free and for a professional look. Available with standard trim kit or plaster-in kit for flush appearance. Family of matching products also available. Required depth height + 25mm^



81433-WL-LED + 8000-PBZ-SQ
Cut-out 83mm Ø



81433-WL-LED + 8000-PCZ-SQ
Cut-out 83mm Ø

| | |
|-------------------------|------------|
| LED Source | LED51/2-SH |
| CCT | 3000K |
| Drive Current | 250mA |
| Power inc Driver | 9.7W |
| Beam Angle | 38° |
| Delivered Lumens | 398 |
| Delivered Intensisty cd | 861 |
| Efficacy lm/w | 41 |
| Forward Volt | 33V |
| CRI | ≥90 CRI |

Project Ref: _____ Location Ref: _____

Fixture Order Code:

81433-WL-LED

 - - -

Fixture

81433-WL-LED

Square Edge90 Washlight with LED51

Finish

WH
BK
RAL

White
Black
Custom RAL Colour*

IP Rating

54

IP54

Emergency

E
ED
ES

Maintained 3hr Emergency
Maintained 3hr DALI Self Test
Maintained 3hr Self Test

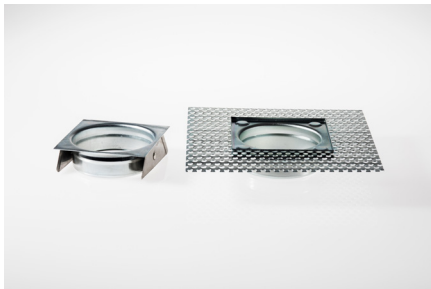
IP Rating: If you do not require an IP rating please leave the box blank

Installation Order Code:

Installation

8000-PBZ-SQ
8000-PCZ-SQ

Trim kit for trimmed appearance
Plaster-kit for seamless flush appearance



LED Order Code:

LED51/2

 - -

38

 -

SH-LO

 -

LED

LED51/2

LED50 ONE GEN2

CCT

927
930
940

90 CRI 2700K
90 CRI 3000K
90 CRI 4000K

Beam

38

38°

Shallow Height Low Output

Protocol

S
A
P
D
B

Non-Dim
Analogue (0-10v)
Phase
DALI
Bluetooth**



Honeycomb Louvre



Warm Tone

Accessories Order Code:

Louvre/Lens
LL45 Honeycomb Louvre
LLCC Warm Tone Lens
LLUV UV Lens

Technical Details

*Custom RAL code must be specified. Custom RAL colours can increase prices and lead times

Dimming. Whilst Lucent can offer the majority of its luminaires with various dimming options, it remains the responsibility of the specifier/installer to check and ensure compatibility of any control equipment used. Additional cabling may be required depending on the dimming protocol specified.

**Bluetooth (wireless) is the communication method. The exact dimming protocol must be confirmed to allow the selection of suitable drivers or bluetooth devices.

^ Depth indicated is the minimum recess depth for the luminaire with a remote mounted LED driver. Installing a driver through either the luminaire cut-out or installation kit may require additional recess depth, please refer to the relevant luminaire installation instructions for further details.Data correct at time of publishing

First Fix Requirement. Luminaire comprised of fixture body with ceiling trim and installation kit, which is to be fitted into the ceiling once finished. Ensure correct alignment of the installation kit before final assembly (see luminaire instllation instructions for details)

IP Rating. Tested from underside of the ceiling

It is the policy of Lucent Lighting to continually review and improve its products and therefore reserve the right to change any details of product or withdraw specifications without prior notice.

Luminaires designed to comply with EN60598 and all other standards.

This specification sheet superseded all previous versions.

All intellectual property rights pertaining to the product described above and to this document are owned by or licensed to Lucent Lighting Ltd.

We reserve the right to take whatever action is necessary to protect those intellectual property rights.

Please notify Lucent Lighting Ltd of any inaccuracies immediately. E&OE

Light efficiency:

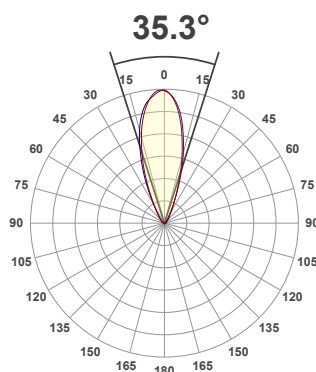
41 Lumen/Watt

Light quality:

CRI: 91.2

Color temperature:

3000 K



Product name:

Square Edge 90 Washlight - LED51_2-30-38-250mA

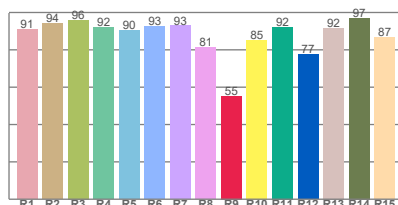
Item number:

81433-WL-LED-LED51_2-30-38-250mA

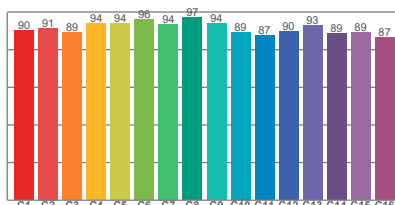
Delivered information for above fixture and LED combination.

Output: 398 Lumen Peak intensity: 861 cd Power consumption: 9.7

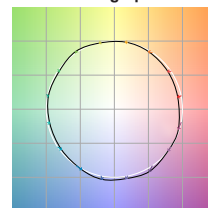
CRI R values



TM30 C Values

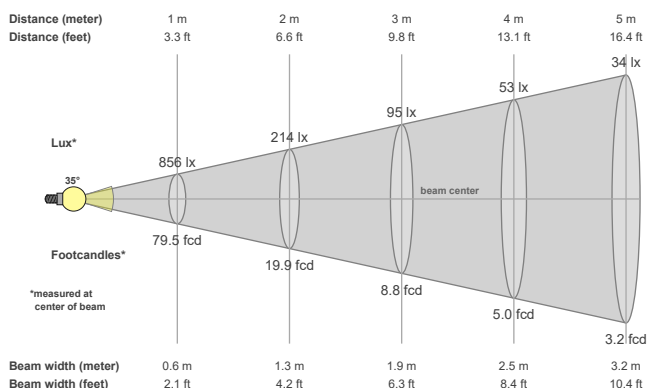


Color vector graphics



| Color temperature | Color rendering index | Red component | Color fidelity | Color gamut | Color quality scale | Color coordinate cie 1931 | Color coordinate cie 1931 | Color coordinate | Color coordinate | Color deviation from black body |
|-------------------|-----------------------|---------------|----------------|-------------|---------------------|---------------------------|---------------------------|------------------|------------------|---------------------------------|
| CCT | CRI | CRI R9 | TM30 Rf | TM30 Rg | CQS | x | y | u | v | Δuv |
| 3000 K | 91.2 | 55.2 | 91.4 | 98.9 | 90.2 | 0.437 | 0.404 | 0.250 | 0.349 | 0.0017 |

Beam details



Beam angels

| Beam angle 50% | Field angle 10% | Cutoff angle 2,5% |
|----------------|-----------------|-------------------|
| 35.3° | 63.8° | 100.7° |

Beam intensities

| Peak intensity | Int. ratio in 120° cone | Int. ratio in 90° cone |
|----------------|-------------------------|------------------------|
| 861 cd | 97.4% | 91.5% |

Beam intensities from 1-20m

| 1m | 2m | 3m | 4m | 5m | 6m | 7m | 8m | 9m | 10m | 11m | 12m | 13m | 14m | 15m | 16m | 17m | 18m | 19m | 20m |
|---------|---------|--------|--------|--------|--------|--------|--------|--------|--------|--------|--------|--------|--------|--------|--------|--------|--------|--------|--------|
| 3.3ft | 6.6ft | 9.8ft | 13.1ft | 16.4ft | 19.7ft | 23ft | 26.2ft | 29.5ft | 32.8ft | 36.1ft | 39.4ft | 42.7ft | 45.9ft | 49.2ft | 52.5ft | 55.8ft | 59.1ft | 62.3ft | 65.6ft |
| 856lx | 214lx | 95lx | 53lx | 34lx | 24lx | 17lx | 13lx | 11lx | 9lx | 7lx | 6lx | 5lx | 4lx | 4lx | 3lx | 3lx | 3lx | 2lx | 2lx |
| 79.5fcd | 19.9fcd | 8.8fcd | 5fcd | 3.2fcd | 2.2fcd | 1.6fcd | 1.2fcd | 1fcd | 0.8fcd | 0.7fcd | 0.6fcd | 0.5fcd | 0.4fcd | 0.4fcd | 0.3fcd | 0.3fcd | 0.2fcd | 0.2fcd | 0.2fcd |

The above information is for 3000K colour temperature, for specific module information please see LED spec located on our website

For information regarding other colour temperatures please use the following factors for lumen output and candelas:

2700K = 1
3500K = 1
4000K = 1.084